



Digital Photo Frame

SPF-83H



Frame manager

Frame Manager is a program needed to use Mini-Monitor. For information on using this, see the Applications section.

Click **Frame Manager icon** to run the install file. You can find the installed Frame Manager in **C:/Program Files/Samsung/Frame Manager**. To run Frame Manager, click Start and point to Programs, and then click **Samsung > Frame Manager > Launch Frame Manager**.



Safety Instructions

- Safety Symbols
- Power
- Installation
- Using and Cleaning

Overview

- Features
- Components
- Front
- Back
- Side

Connecting

- Power
- USB
- Memory Card

Using

- Buttons
- Photo
- Clock
- Settings

Applications

- Mini-Monitor

Specifications

- Specifications
- Supported Files

Troubleshooting

- Troubleshooting
- Terminology
- Service Centers



Acrobat Reader



User's Guide PDF manual



Regulatory



Frame Manager XP



Frame Manager PDF manual

Using, copying or reproducing the whole or part of this manual without written permission from Samsung Electronic is prohibited. The content of this manual is subject to change without prior notice. ©2007 All rights reserved. Samsung Electronics.

Digital Photo Frame
SPF-83H







Digital Photo Frame ○○○○○○○○○○
SPF-83H

☰ Safety Instructions

▣ Safety Symbols

※ Make sure to follow the directions below to prevent accidents and damage to the product.

 **Warning** Failure to follow the accompanying directions may lead to serious injury or death.

 **Attention** Failure to follow the accompanying directions may lead to minor personal injury or property damage.

▣ Power

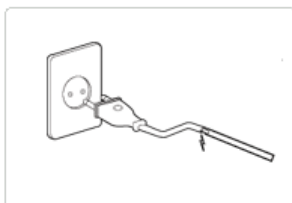
※ The images here are for reference only, and are not applicable in all cases (or countries).

 **Warning**



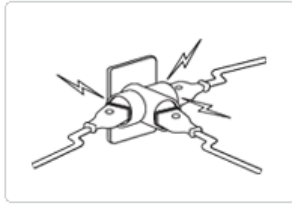
▶ **Insert the power plug correctly until it is firmly in place.**

- Failing to do so, may cause fire.



▶ **Do not use a damaged power plug, cord or outlet, as this may cause electric shock or fire.**

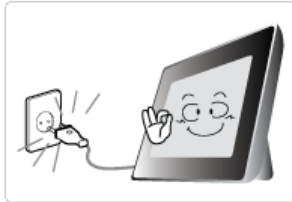
▶ **Do not touch the power plug with wet hands, as this may cause electric shock.**



▶ **Do not connect more than one appliance to a single outlet, as an overheated outlet may cause fire.**



▶ **Do not use force to pull the power cord. Don't place anything heavy on the power cord, as this may cause electric shock or fire.**



▶ **Make sure to turn the power off and disconnect the power plug from the outlet before moving the product. Make sure to disconnect the connection cables from other devices as well.**

- Moving the product without disconnecting the power cord may damage it while moving, and may cause electric shock or fire.

! Attention



▶ **Hold and pull out the plug by its body when disconnecting it from the outlet, as pulling the plug out by the cord may cause it to be damaged.**

- Failing to do so, may cause fire, or the product may not turn on normally.



▶ **Ensure that the power plug is disconnected before cleaning the product.**

- Failing to do so, may cause electric shock or fire.



▶ **Do not let water come into contact with or enter the power adapter, as this may cause electric shock or fire.**

- Do not use the product outdoors in snowy or rainy weather, or near any water.
- When cleaning the floor with water, avoid any water contact with the power adapter.

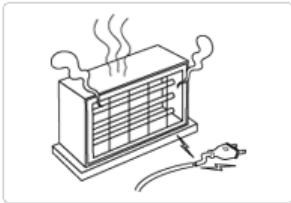


▶ **Do not place the power adapter near a heater, as this may cause fire.**

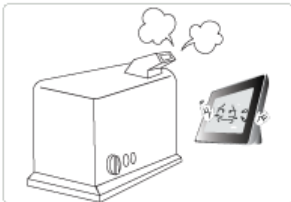
Installation**Warning**

▶ **When installing the product on a cabinet or shelf, do not let the front end of the product project beyond its front edge.**

- Failing to do so, may cause the product to fall, resulting in a product malfunction or personal injury.



▶ **Do not place the power cord near a heater, as the power cord may melt, causing electric shock or fire.**



▶ **Do not install the product in a car or a location exposed to oil, smoke, moisture, water, or rainwater.**

- Any contact of these materials with the product may cause electric shock or fire.



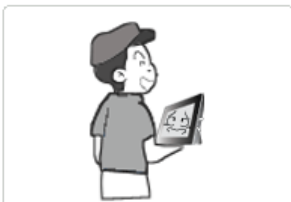
▶ **Disconnect the power plug when there is thunder or lightning.**

- Failing to do so, may cause electric shock or fire.

Attention

▶ **Place the product down gently when installing it.**

- Failing to do so may cause product damage or personal injury.



▶ **Avoid dropping the product when moving, as this may cause product damage or personal injury.**



▶ **Do not install the product in a location easily reached by children.**

- As the product may fall and cause personal injury.

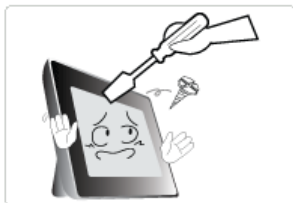
Using and Cleaning

Warning



▶ Do not insert any metal objects such as forks, wire, or gimlets, or flammable items such as paper or matches into the ports at the back of the product, as this may cause electric shock or fire.

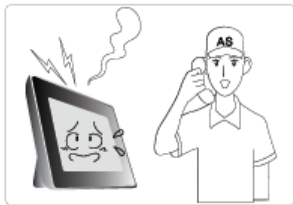
- If water or any foreign substance enters the product, make sure to turn the product off disconnect the power plug from the outlet, and contact a **service center**.



▶ Never disassemble, repair, or modify the product yourself.

- If you need to repair your product, contact a **service center**. An attempt at repairing this product may cause electric shock or fire.

Attention



▶ If you hear a strange sound, smell anything burning, or see smoke, disconnect the power plug immediately and contact a **service center**.

- Failing to disconnect the power plug may cause electric shock or fire.



▶ Always remove dust and water from the pins and connections of the power plug.

- Failing to do so may cause electric shock or fire.



▶ When cleaning the product, first disconnect the power plug and clean it with a soft, dry cloth.

- Do not use any chemicals such as benzene, alcohol, thinners, mosquito repellent, aromatic, lubricant, detergent or wax.



▶ When not using the product for a long time, make sure to disconnect the power plug.

- Heavy accumulated dust may cause electric shock or fire.



▶ If the product needs to be installed in a location that doesn't satisfy general conditions, make sure to contact one of our service engineers about the installation as the product may encounter serious quality problems due to its environment.

- This refers to locations exposed to conditions such as heavy fine dust, chemicals, high or low temperature, moisture, or when the product needs to be used continually without a break over a long time.

▶ If the product has been dropped or the product casing is damaged, turn it off and



disconnect the power plug.

- Using the product without verifying that it has not been damaged may cause electric shock or fire. Please contact a **service center**.

**Correct Disposal of This Product
(Waste Electrical & Electronic Equipment) - Europe only**

(Applicable in the European Union and other European countries with separate collection systems)



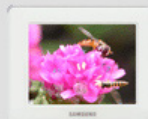
This marking shown on the product or its literature, indicates that it should not be disposed with other household waste at the end of its working life. To prevent possible harm to the environment or damage to health from uncontrolled waste disposal, please separate this from other types of waste and recycle it responsibly to promote the sustainable reuse of material resources.

Household users should contact either the retailer where they purchased this product, or their local government office, for details of where and how they can take this item for environmentally safe recycling.

Business users should contact their supplier and check the terms and conditions of the purchase contract. This product should not be mixed with other commercial wastes for disposal.

Using, copying or reproducing the whole or part of this manual without written permission from Samsung Electronics is prohibited. The content of this manual is subject to change without prior notice. ©2007 All rights reserved. Samsung Electronics.

Digital Photo Frame
SPF-83H





Overview

Digital Photo Frame ○○○○○○○○○○

SPF-83H

- Features
- Components
- Front
- Back
- Side

Overview

- | [Features](#) | [Components](#) | [Front](#) | [Back](#) | [Side](#) |

Features

- 01 Expand the memory capacity with a memory card. Enjoy stored images immediately.**
 - By connecting a CF or SD/MMC/MS/xD memory card of your digital camera to your Digital Photo Frame, you can enjoy the images on your Digital Photo Frame quickly and easily. This also provides a way to expand the memory capacity of your Digital Photo Frame.
- 02 Stylish design**
 - With its sleek and clean, high class design, your Digital Photo Frame doubles as an ornament for your desk or table.
 - A 360 degree rotating stand allows both horizontal and vertical installations.

- | [Features](#) | [Components](#) | [Front](#) | [Back](#) | [Side](#) |

Please check that all components are contained in the delivered package.
If anything is omitted, contact the local distributor where the product was purchased. For optional items, contact a [service center](#).
Never use a power adapter other than the adapter provided with the product.

Components



Digital Photo Frame



Quick Start



Warranty
(Not available in all locations)



User Manual

Cables



Power cord
U.S.A. : 3903-000192
(Part No. are not applicable in all countries.)



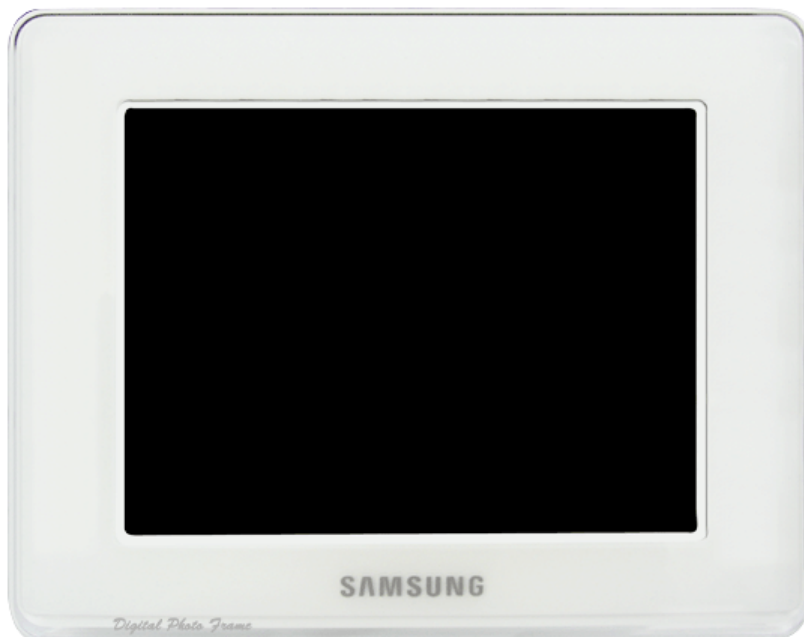
USB cable (A-B type)
(GK39-00013B)



Power Adapter
(BN44-00133A)

- | [Features](#) | [Components](#) | [Front](#) | [Back](#) | [Side](#) |




Front



- | [Features](#) | [Components](#) | [Front](#) | [Back](#) | [Side](#) |

Back



- 1**  **Kensington lock** The Kensington lock is a device used to physically secure the system when using it in a public place. (The locking device has to be purchased separately.)
For using a locking device, please contact where you purchased it.
- 2**  **Power terminal** Connect the power adapter to this jack.
 Connect the power cord to the power terminal of the power adapter.
- 3**  **USB connection terminal** Connect a PC or an external device using a USB cable.
Up stream terminal Connect your Digital Photo Frame to a PC's USB terminal with a USB cable. (Compatible with USB 2.0(device))
※ Make sure to use the USB cable (A-mini B type) provided with the product when connecting your digital photo frame to a PC through the up stream terminal.
- 4** **Stand** A stand allows both horizontal and vertical installation.
 If your Digital Photo Frame is installed vertically, you can rotate your photos using the rotation function to fit the vertical installation.
- 5** **Sliding Prevention Holder** Supports the product so that it stays firmly in place on slippery surfaces.

| [Features](#) | [Components](#) | [Front](#) | [Back](#) | [Side](#) |

[Side](#)



1 [⏻] Power Button
Power Indicator

Turns the product on or off.

Connect the power cord to the power terminal of the power adapter.
Shows the power status. When the product is powered on, the power light turns on.

2 [MENU] Menu Button

Displays the menu window at the bottom left corner of the screen.

3 [^] Up Button

Used for moving up.

4 [←] Left Button

Used for moving left.

5 [→] Right Button

Used for moving right.

6 [v] Down Button

Used for moving down.

7 [ENTER] [↵] Enter Button
[▶||] Play / Pause Button

Used for selection

Play / Pause during playback.

8 [BACK] Back Button

Returns to the previous menu.



Allows you to insert an optional memory card. (Only applicable for CF/SD/MMC/MS/XD card)

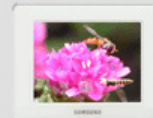


Connect a PC or an external device using a USB cable.

Down stream terminal Connect your Digital Photo Frame to a USB-supported.
(Insert USB storage device)

Using, copying or reproducing the whole or part of this manual without written permission from Samsung Electronics is prohibited. The content of this manual is subject to change without prior notice. ©2007 All rights reserved. Samsung Electronics.

Digital Photo Frame
SPF-83H





Digital Photo Frame ○○○○○○○○○○
SPF-83H

↑ TOP
↑ MAIN

☰ Connecting

| [Power](#) | [USB](#) | [Memory Card](#) |

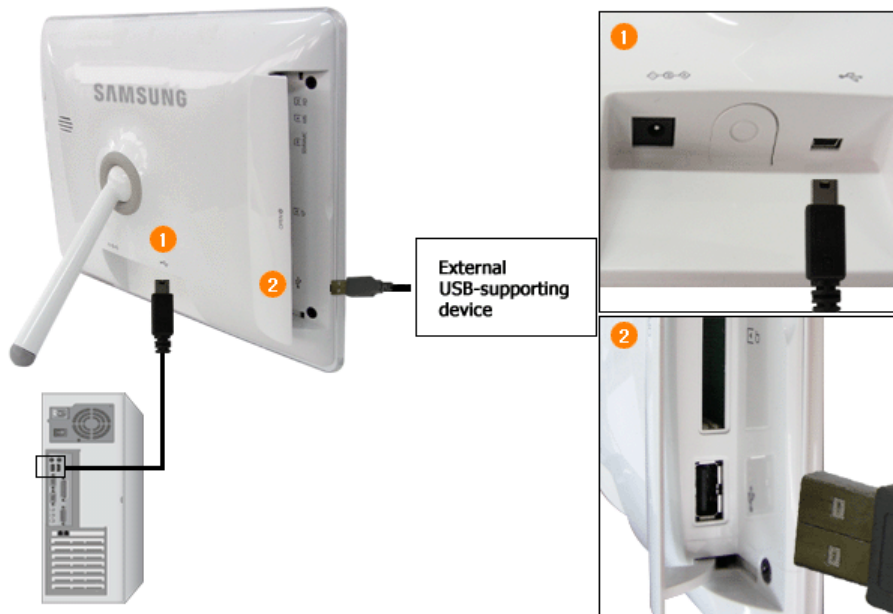
▣ Power



- 1 Connect the power adapter to the terminal at the back of the product.
- 2 Connect the power cord to the power adapter.
- 3 Plug the power cord for the product into a nearby outlet.
- 4 Press the button at the right of the product to turn the product on.

| [Power](#) | [USB](#) | [Memory Card](#) |

▣ USB



1 Up Stream Terminal

Used to connect your digital photo frame to a PC.

✘ When connecting your digital photo frame to a PC through the up stream terminal, make sure to use the USB cable provided with the product.

2 Down Stream Terminal

Used to connect an external USB-supporting device to your digital photo frame.

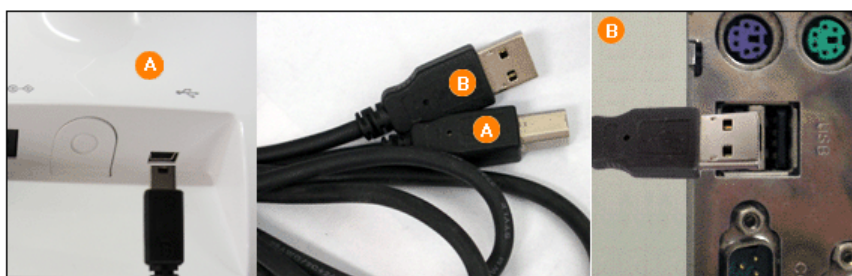
✘ If you connect your USB memory stick product to a USB hub or USB extension, it may not be recognized. Therefore, make sure that the USB memory stick is inserted directly into the USB port.

✘ When connecting an external device to the down stream terminal, use the USB cable provided with the external device. (For more information on external devices and their cables, contact a relevant [service center](#).)

✘ Samsung carries no liability for external device malfunctions caused by using any cable except the standard cables specified for each device.

✘ Some external products provide a cable that does not meet USB standards. Hence, they may cause a malfunction.

✘ If an external storage device does not work normally when connected to your digital photo frame, try to connect it to your PC. If it still does not work normally when connected to your PC, contact a [service center](#) for that external device or your PC.



A Connect to the up stream terminal of your digital photo frame.

B Connect the USB terminal of your PC.

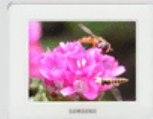


1 CF/SD/MMC/MS/xD CARD Slide the card in the direction marked on the top of the card.

✘ When the power is turned on, the Photo menu screen appears automatically and a slide show starts with the photos in the Frame Memory. If external memory, such as a memory card or USB memory, is installed, it is selected first and a slide show starts with the photos in its root directory. If there are no photo files, a list of folders is displayed.

Using, copying or reproducing the whole or part of this manual without written permission from Samsung Electronics is prohibited. The content of this manual is subject to change without prior notice. ©2007 All rights reserved. Samsung Electronics.

Digital Photo Frame
SPF-83H





Using Digital Photo Frame ○○○○○○○○○○
SPF-83H

- Buttons
- Photo
- Clock
- Settings

- ↑ TOP
- ↶ MAIN
- ↑ ↶

Using

- ✘ When turning on the power, a slide show starts with the photo files in the root directory of the installed external memory device. If there are no photo files or no external memory device is installed, the Photo menu screen is displayed.
- ✘ If there are no key operations for five (5) minutes, the current mode changes to Clock mode to protect the screen. But Slide Show mode has no change. If you press the MENU button in Clock mode, a sub menu is displayed. Press the BACK button to return to the main screen.

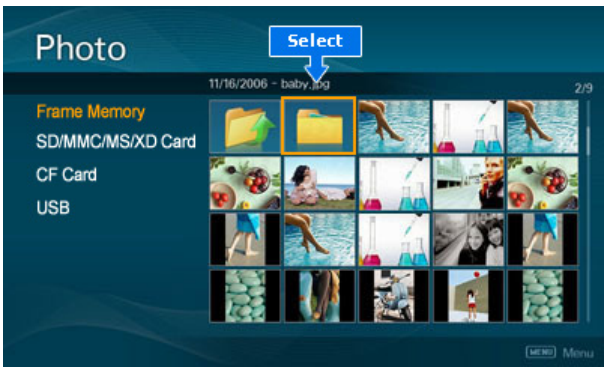
Buttons

Direct Functions

Button	Description
MENU	Opens the on-screen menu and exits from the menu.
^, v, <, >	These buttons allow you to adjust items in the menu.
ENTER	Activates a highlighted menu item.
BACK	Use this button to step one step back in the menu.

Photo

When a folder is selected



- ✘ When pressing the MENU, on-screen menu is displayed on the screen.



OSD	Description
Open	Open the folder.
Copy	Copy the folder.
Delete	Delete the folder.

➤ When Thumbnail list is selected



✘ When pressing the MENU, on-screen menu is displayed on the screen.

OSD	Description
Start Slide Show	Start slideshow.
Copy / Copy All files	Copy the file.
Delete / Delete All files	Delete the file.

➤ Slide Show



✘ When pressing the MENU, on-screen menu is displayed on the screen.
Only photos with a resolution of less than 8000 (width) * 8000 (height) pixels can be displayed on the screen.

Upper OSD	Sub OSD	Detail OSD	Description
Start Slide Show	Start slideshow		
	Slide Show Effect	◆ Off, Fade, Shutter, Cross Comb, Mask, Brick, Dissolve, Bar, Expansion, Silk, Random	Select an effect to give when displaying images on the screen.
	Slide Show Speed	◆ Fast, Normal, Slow	
Slide Show Settings	Select a mode among Fast, Normal, and Slow.		
	Slide Show Repeat	◆ On, Off	Select the Repeat for displaying images.
	Slide Show Shuffle	◆ On, Off	Select whether to playback the files sequentially or in shuffle mode.
Brightness	◆ 0~100		Adjust brightness from 0 to 100 levels.

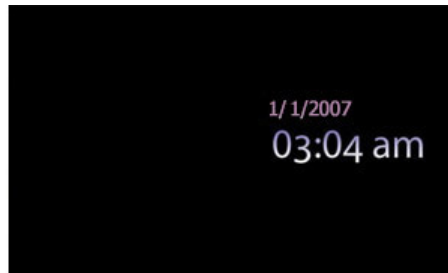
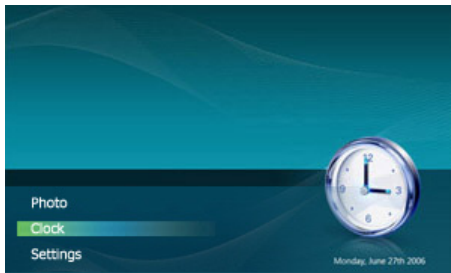
	♦ On, Off	
Auto Rotation		If a photo is to be displayed in portrait mode while your Digital Album is placed horizontally, it is automatically displayed rotated and fit to the width.
	♦ Original, 90°, 180°, 270°	
Rotate		Select one among Original, 90°, 180°, and 270°.
	♦ Original, x1, x2, x4	
Zoom		Select this if you want to zoom into a photo. You can magnify it to the x2 or x4 size. The x1 size is when the photo is set to Fit to Width.
	♦ Original, Fit To Width, Fit To Screen	
Aspect Ratio		Select an aspect ratio for images to display.

➤ Direct Functions (Slide Show)

Button	Status	Description
>	Pause slideshow	Play the next file in the list. Show the information on the file
<	Pause slideshow	Play the previous file in the list. Show the information on the file.
▶	[▶] Play slideshow.	Show the information on the file
	[] Pause slideshow.	Pause slideshow. Play slideshow.
MENU	Play slideshow	Pause slideshow. Show the menu on the file.
	Pause slideshow	Exit the menu. Play slideshow.

| **Buttons** | **Photo** | **Clock** | **Settings** |

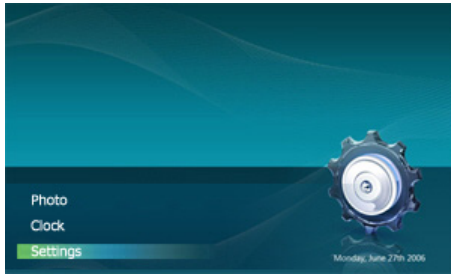
▶ Clock



✘ When pressing the MENU, on-screen menu is displayed on the screen.

Upper OSD	Detail OSD	Description
	♦ 12 Hours, 24 Hours	
Time Format		Enter and set 12 Hours, 24 Hours.
	♦ YYYY/MM/DD, MM/DD/YYYY, DD/MM/YYYY	
Date Format		Select a Date Format.
	set to 12 Hours	♦ Day, Month, Date, Year, Hour, Minute am/pm
	set to 24 Hours	Day, Month, Date, Year, Hour, Minute
Date and Time		Enter and set Month, Day, Year, Hour, Minute or am/pm. Whenever the power plug is disconnected, the Date and Time information is lost. Therefore, you need to reset them each time.
	set to 12 Hours	♦ Activation, Hour, Minute, am/pm, Repeat
	set to 24 Hours	Activation, Hour, Minute, Repeat
On Timer		Your product will turn on at the specified time automatically.
	set to 12 Hours	♦ Activation, Hour, Minute, am/pm, Repeat
	set to 24 Hours	Activation, Hour, Minute, Repeat
Off Timer		Your product will turn off at the specified time automatically.

Settings



Upper OSD

Detail OSD

Description

Language	<ul style="list-style-type: none"> ◆ English, Deutsch, Español, Français, Italiano, Nederlands, Polski, Português, Русский, Svenska, Türkçe, 简体中文, 繁體中文, 日本語, 한국어 <p>Select a language to use for your product.</p>
Auto Slide Show	<ul style="list-style-type: none"> ◆ Off, On <p>If On is selected, a slide show starts automatically when your monitor is turned on.</p>
Brightness	<ul style="list-style-type: none"> ◆ 0~100 <p>Adjust brightness from 0 to 100 levels.</p>
Firmware Update	<p>Update the product using an external memory(CF/SD/MMC/MS/xD, USB). Please visit www.samsung.com for the latest firmware update.</p>
System Information	<ul style="list-style-type: none"> ◆ Model, Firmware Version <p>View the product information.</p>
Reset Settings	<ul style="list-style-type: none"> ◆ Yes, No <p>Reverts the product settings to factory defaults.</p>

➔ I want to update firmware.

01 Preparations

- 01 Digital Photo Frame
- 02 Firmware update file.
- ✗ Please visit www.samsung.com for the latest firmware update.
- 03 USB memory card or external memory devices(CF/SD/MMC/MS/xD)

02 Connect USB memory card to PC

- 01 If you are ready, connect the USB memory card to your PC.
- 02 Copy the firmware update file you downloaded to the USB memory card.
- ✗ (Make sure to copy the firmware update file to the root directory.)

03 Connect USB Memory Card to Digital Photo Frame

- 01 Remove the USB memory card from your PC, and connect it to your Digital Photo Frame.
- ✗ If your Digital Photo Frame is off, turn it on.

04 Select Update

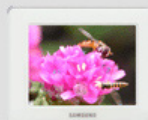
- 01 Select **Firmware Update** of **Settings**.

05 Updating

- 01 The update progression is displayed on the screen.
When the update finishes, turn your Digital Photo Frame off, remove the USB memory card, and turn your Digital Photo Frame on again, for maximum safety.
- ✗ Do not remove the USB memory card during the update operation.
Do not press any key during the update operation.
Do not insert any other card during the update operation.
Do not turn your Digital Photo Frame off during the update operation.
You can identify whether the update operation has finished successfully or not by checking the firmware version of your Digital Photo Frame is changed to the version of the firmware update.

Using, copying or reproducing the whole or part of this manual without written permission from Samsung Electronics is prohibited. The content of this manual is subject to change without prior notice. ©2007 All rights reserved. Samsung Electronics.

Digital Photo Frame
SPF-83H





Applications

[↑ TOP](#)
[↶ MAIN](#)
[↑ ↶](#)

To use your digital photo frame as a Mini-Monitor (the secondary monitor) using a USB cable.

▶ Installing Frame Manager guide

▶ Frame Manager User's Manual

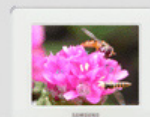
- Using your digital photo frame as a Mini-Monitor.
- Using your digital photo frame as Mass Storage.
- Changing the current mode to another mode
- Adjusting the brightness
- Updating the firmware

※ System Requirements

- **OS** : Windows XP SP2
- **USB** : Extended Host Controller (EHCT) for USB 2.0
- **RAM** : 256 MB or above

※ Caution

1. Windows XP Service Pack 2 must be installed.
It might not operate with any operating systems other than Windows XP SP2. We are not liable for problems that may occur when installing it on an operating system other than Windows XP SP2.
2. We recommend a CPU speed of 2.4 GHz or higher.
Your digital photo frame might not operate normally if the performance specifications of your PC are lower than the recommendations.
3. Make sure to install it correctly as directed in the Installation Guide.
4. Do not use your Mini-Monitor as a primary monitor.
We are not liable for any problems that may occur if you do not follow the directions. If it is used as a primary monitor, the screen may be blank.
5. Make sure to use the provided USB cable.
6. When using your digital photo frame as a Mini-Monitor, all buttons except for the Power button will not operate.
7. Move the programs displayed and used on the Mini-Monitor to the primary monitor after you have finished using it.
8. The Mini-Monitor may not operate with some video cards. In this case, set the 'Hardware acceleration' value to 'None'.
 - ※ To set Hardware acceleration to None: Right-click on the Windows Desktop and select Properties from the displayed menu. The Display Properties window appears. Click Settings > Advanced > Troubleshoot tab. Move the Hardware acceleration slide to None.





Specifications *Digital Photo Frame* ○○○○○○○○○○

Specifications

Supported Files

SPF-83H

[Safety Instructions](#) | [Overview](#) | [Connecting](#) | [Using](#) | [Applications](#) | **[Specifications](#)** | [Troubleshooting](#)

- [↑ TOP](#)
- [↑ MAIN](#)
- [↑](#)

Specifications

| [Specifications](#) | [Supported Files](#) |

Specifications

Items	Specifications	
Model Name	SPF-83H	
Panel	Type	8" (20 cm) TFT
	Resolution	800 x 600
	Brightness	200 cd/m ²
	Contrast Ratio	500 : 1
	Interface	RGB 6bit TTL
Supported Formats	JPEG (Baseline, RGB)	
Operating System	Windows 2000(SP2), Windows XP, MAC OS X(10.x), Linx OS (2.6.x)	
Built-in Memory	128 MB(FAT32)	
USB	One upstream (device 2.0) and one downstream (host 1.1)	
Memory Card	CF/SD/MMC/MS/xD (FAT32)	
Power	Rating	External DC power adapter (12V, 2A, 24W)
	Consumption	Normal mode : under 12W, power saving mode : under 5W, Power off mode : under 1W
Content Files	Photo File	Slide show Run / Slide Show Effect / Rotate / Thumbnail View
General	Dimensions (WxHxD)	230.5 x 182.4 x 120 mm / 9.0 x 7.1 x 4.7 inch
	Weight	650 g / 1.4 lb

✘ **The product design may differ according to the model, and specifications are subject to change without prior notice for product performance enhancement.**



Class B Equipment (Information Communication equipment for residential use)

This product complies with the Electromagnetic Compatibility Directives for residential Use and can be used in all areas including common residential areas. (Class B equipment radiates less electromagnetic influences than class A equipment.)

| [Specifications](#) |

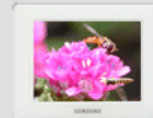
| [Supported Files](#) |

Supported Files

- ◆ Resolution : Less than 8000x8000
- ◆ Supported image file format : JPEG (not supported Progressive JPEG and YUV 422 V format)

Using, copying or reproducing the whole or part of this manual without written permission from Samsung Electronics is prohibited. The content of this manual is subject to change without prior notice.
©2007 All rights reserved. Samsung Electronics.

Digital Photo Frame
SPF-83H





Troubleshooting *Digital Photo Frame* ○○○○○○○○○○
 Troubleshooting
 Terminology
 Service Centers
SPF-83H

⋮ Troubleshooting

▣ Troubleshooting

This section lists various problems and solutions encountered by users while using the digital photo frame. When encountering a problem, first check the list below and follow the suggested action if one matches your problem. If the problem still persists, contact or visit the nearest [service center](#).

Symptoms	Possible Causes and Suggested Actions
My Digital Photo Frame does not turn on.	<ul style="list-style-type: none"> ◆ Check the power connection between the product and the power adapter.
On Timer and Off Timer does not work.	<ul style="list-style-type: none"> ◆ If auto On Timer and Off Timer are set to the same time, they do not work. Please check these times. If both the On Timer and Off Timer are set to the same time, the Off Timer has priority and operates first.
It takes some time to display an image after the digital photo frame turns on.	<ul style="list-style-type: none"> ◆ Loading a file from an external memory card may take several seconds. (This depends on the file format and size.)
The aspect ratio of the screen looks abnormal.	<ul style="list-style-type: none"> ◆ Select one of the three values in the Photo>Aspect Ratio menu using the buttons on the right side of the product. (See Photo>Aspect Ratio)
The screen color is dimmed or too strong.	<ul style="list-style-type: none"> ◆ Adjust the brightness in the Settings>Brightness menu using the buttons on the right side of the product. (See Settings>Brightness)
I have connected an external device (USB memory device), but it does not work.	<ul style="list-style-type: none"> ◆ Check the cable connection between the product and the external device. ◆ Check whether the external device works as a standalone, and check the format of the files stored on it. ◆ For this product, the USB host operates using USB 1.1 specifications and the USB devices operate using USB 2.0 specifications.
Whenever I turn my Digital Photo Frame off and on, I find the time goes wrong.	<ul style="list-style-type: none"> ◆ This product has no built-in battery. When the power turns off, the time info disappears. Therefore, you need to reset the time whenever the Digital Photo Frame is turned on.
A menu is not displayed immediately when I press the menu button.	<ul style="list-style-type: none"> ◆ Displaying the menu and other operations may take some time while the product is loading an image to display on the screen.
Photos are automatically displayed as rotated.	<ul style="list-style-type: none"> ◆ Check if Auto Rotation is set to On.
The slide show does not start automatically.	<ul style="list-style-type: none"> ◆ Check if Auto Slide Show is set to Off.

I have connected a memory card, but it does not work.



- ◆ Check the file system on the memory card.

I have connected a USB memory device, but it does not work.



- ◆ Check the type of the USB memory device. This product may not support the compound USB device.

| [Troubleshooting](#) | [Terminology](#) | [Service Centers](#) |

Terminology

Terms	Description
JPEG (Joint Photographic Coding Expert Group)	<ul style="list-style-type: none">◆ JPEG is an image compression technology. It provides the smallest loss of all image compression technologies. It is used widely to transmit multimedia files on the Internet and for other uses. An image file formatted in the JPEG format is called a JPEG or JPG file. Usually, a JPEG file is created by taking a picture with a digital camera, by drawing on a computer, or by a graphic package and then by compressing the graphics image into the JPEG format.
SD Card (Secure Digital Card)	<ul style="list-style-type: none">◆ An SD card is a Flash memory card the size of a postage stamp. It provides high stability and high capacity. It is widely used in various digital products such as PDAs, digital cameras, MP3 players, cell phones, and notebook PCs. Its appearance is similar to that of MMC, but the number of pins and their thickness is different. It also has a password setting function for data security.
MMC (Multi Media Card)	<ul style="list-style-type: none">◆ MMC is external Flash memory used for small mobile devices, as in the case of the SD card. Because it has smaller footprints than SD/MMC cards, it has become widely accepted as the standard for memory cards. It is usually used to save movies and photos.
USB Cable 1) A-B TYPE	<ul style="list-style-type: none">◆ Use the up stream terminal when connecting to a PC. This product supports USB 2.0. An A-B type cable which is used to connect your digital photo frame to a PC is provided with the product. The A type is the USB connector used to connect to a PC. The B type is the USB connector used to connect to an external device. You can connect your digital photo frame to a PC using an A-B type USB cable.
USB Cable 2) Cable for Connecting Other Devices	<ul style="list-style-type: none">◆ Use this type of cable when using the down stream terminal. This product supports USB 2.0. When connecting an external device to the down stream terminal, use the USB cable provided with the external device.

| [Troubleshooting](#) | [Terminology](#) | [Service Centers](#) |

Service Centers

If you need a product service, contact or visit a Samsung [service center](#).
For services for network connection and the Server.

Services

Contacts

Samsung Electronics web site

www.samsung.com



If you have any questions or comments relating to Samsung products, please contact the SAMSUNG customer care center.

North America

U.S.A	1-800-SAMSUNG (726-7864)	http://www.samsung.com/us
CANADA	1-800-SAMSUNG (726-7864)	http://www.samsung.com/ca
MEXICO	01-800-SAMSUNG (726-7864)	http://www.samsung.com/mx

Latin America

ARGENTINE	0800-333-3733	http://www.samsung.com/ar
BRAZIL	0800-124-421 4004-0000	http://www.samsung.com/br
CHILE	800-SAMSUNG (726-7864)	http://www.samsung.com/cl
COLOMBIA	01-8000112112	http://www.samsung.com.co
COSTA RICA	0-800-507-7267	http://www.samsung.com/latin
ECUADOR	1-800-10-7267	http://www.samsung.com/latin
EL SALVADOR	800-6225	http://www.samsung.com/latin
GUATEMALA	1-800-299-0013	http://www.samsung.com/latin
JAMAICA	1-800-234-7267	http://www.samsung.com/latin
PANAMA	800-7267	http://www.samsung.com/latin
PUERTO RICO	1-800-682-3180	http://www.samsung.com/latin
REP. DOMINICA	1-800-751-2676	http://www.samsung.com/latin
TRINIDAD & TOBAGO	1-800-SAMSUNG (726-7864)	http://www.samsung.com/latin
VENEZUELA	0-800-100-5303	http://www.samsung.com/latin

Europe

AUSTRIA	0800-SAMSUNG(726-7864)	http://www.samsung.com/at
BELGIUM	0032 (0)2 201 24 18	http://www.samsung.com/be
CZECH REPUBLIC	844 000 844	http://www.samsung.com/cz
	Distributor pro Českou republiku: Samsung Zrt., česká organizační složka Vyskočilova 4, 14000 Praha 4	
DENMARK	70 70 19 70	http://www.samsung.com/dk
FINLAND	70 70 19 70	http://www.samsung.com/fi
FRANCE	3260 SAMSUNG(726-7864) 08 25 08 65 65 (€ 0,15/Min)	http://www.samsung.com/fr
GERMANY	01805-SAMSUNG(726-7864) (€ 0,14/Min)	http://www.samsung.de
HUNGARY	06-80-SAMSUNG (726-7864)	http://www.samsung.com/hu
ITALIA	06-80-SAMSUNG(726-7864)	http://www.samsung.com/it
LUXEMBURG	0035 (0)2 261 03 710	http://www.samsung.com/be
NETHERLANDS	0900 SAMSUNG(726-7864) (€ 0,10/Min)	http://www.samsung.com/nl
NORWAY	815-56 480	http://www.samsung.com/no
POLAND	0 801 801 881 022-607-93-33	http://www.samsung.com/pl

PORTUGAL	80 8 200 128	http://www.samsung.com/pt
REPUBLIC OF IRELAND	0818 717 100	http://www.samsung.com/ie
SLOVAKIA	0800-SAMSUNG(726-7864)	http://www.samsung.com/sk
SPAIN	902 10 11 30	http://www.samsung.com/es
SWEDEN	0771-400 200	http://www.samsung.com/se
SWITZERLAND	0800-SAMSUNG(726-7864)	http://www.samsung.com/ch
U.K	0870-SAMSUNG(726-7864)	http://www.samsung.com/uk

CIS

ESTONIA	800-7267	http://www.samsung.ee
LATVIA	800-7267	http://www.samsung.com/lv
LITHUANIA	8-800-77777	http://www.samsung.lt
KAZAKHSTAN	8-10-800-500-55-500	http://www.samsung.kz
KYRGYZSTAN	00-800-500-55-500	
RUSSIA	8-800-555-55-55	http://www.samsung.ru
UKRAINE	8-800-502-0000	http://www.samsung.ua
UZBEKISTAN	8-800-120-0-400	http://www.samsung.uz

Asia Pacific

AUSTRALIA	1300 362 603	http://www.samsung.com/au
CHINA	800-810-5858 010-6475 1880	http://www.samsung.com/cn
HONG KONG	3698-4698	http://www.samsung.com/hk
INDIA	3030 8282 1800 110011	http://www.samsung.com/in/
INDONESIA	0800-112-8888	http://www.samsung.com/id
JAPAN	0120-327-527	http://www.samsung.com/jp
MALAYSIA	1800-88-9999	http://www.samsung.com/my
NEW ZEALAND	0800SAMSUNG(726-7864)	http://www.samsung.com/nz
PHILIPPINES	1800-10-SAMSUNG(726-7864)	http://www.samsung.com/ph
SINGAPORE	1800-SAMSUNG(726-7864)	http://www.samsung.com/sg
THAILAND	1800-29-3232, 02-689-3232	http://www.samsung.com/th
TAIWAN	0800-329-999	http://www.samsung.com/tw
VIETNAM	1 800 588 889	http://www.samsung.com/vn

Middle East & Africa

SOUTH AFRICA	0860-SAMSUNG(726-7864)	http://www.samsung.com/za
TURKEY	444 77 11	http://www.samsung.com.tr
U.A.E	800-SAMSUNG (726-7864) 8000-4726	http://www.samsung.com/mea

Using, copying or reproducing the whole or part of this manual without written permission from Samsung Electronics is prohibited. The content of this manual is subject to change without prior notice. ©2007 All rights reserved. Samsung Electronics.

Digital Photo Frame
SPF-83H

